



2025

GasTechno Energy Center Opportunity

Legal Notices

Legal Notices & Terms of Use

Copyright © 2025 GasTechno Energy & Fuels (USA) LLC. The following trademarks which may be identified in this document are trademarks of GasTechno Energy & Fuels (USA) LLC: Mini-GTL®, GasTechno®, Mini-GTL In A Box®, Methanol In A Box®, Mini-GTL In A Box®, Micro-GTL®, Simple Hardware Sophisticated Software®. All other trademarks are property of their respective owners.

Confidentiality

This confidential document has been prepared for those wishing to establish a business relationship with GasTechno Energy & Fuels (USA) LLC. By accepting a copy of this document, the recipient agrees not to reproduce it, in whole or in part, not to use it for any other purpose for which the document was released, and not to disclose any of the contents of this document to third parties without written permission of GasTechno Energy & Fuels (USA) LLC. No representation or warranty is made by GasTechno Energy & Fuels (USA) LLC, its partners, or any other entity as to the accuracy or completeness of such information, and none of the information contained within this document shall be relied upon as an expressed promise or future representation.

Not an Offer of Securities

This document does not constitute an offer of, or an invitation to subscribe to or purchase any Common Stock or other securities of GasTechno Energy & Fuels (USA) LLC. Any decision to invest in GasTechno Energy & Fuels (USA) LLC at any time such investment is actually offered, must be based solely upon the information set forth in the Offering Documents and the due diligence of the prospective investor.

Forward Looking Statements

The company, from time to time, may discuss forward-looking information in this document. Forward-looking statements are based on many assumptions and facts, and are subject to many conditions, including the receipt or enforceability of contracts, the availability of products and services, the local political, economic and employment environment and the market for natural gas. Except for historical information contained in the document, all forward-looking information involves estimates by the company's management and is subject to various risks and uncertainties that may be beyond the company's control and may cause results to differ from management's current expectations. Actual results, performance or achievements of the company may materially differ from the forward-looking information and from future results, performance or achievements expressed or implied by such forward-looking statements.

Resilient Business Model

- Multiple revenue streams, including franchise licensing, landfill-gas JVs (methanol sales), and standalone sales of Mini-GTL plants (technology provision) that allow revenue diversification and risk mitigation with carbon-based markets growing rapidly
- Business model ensures vertical integration and value capture in the entire methanol value chain, from providing technology to production and low emissions truck conversion sales

Leading Technology

- Technology portfolio offers one of the world's most established and patent-protected direct methanol pathways to renewable fuels as validated by AON Intellectual Property Group
- Relatively smaller size (compared to plants with same capacities) and modular nature of GasTechno Mini-GTL plants enables quick cash flow generation due to its low capex and construction/commissioning time required by leading competitors

Abundant Feedstock

- Feedstock required is landfill gas, which will be used for the conversion of methane to methanol through GasTechno's renewable fuel pathways such as biogas to methanol and then at its GasTechno Energy Centers to make hydrogen and convert FCEV & MeOH trucks
- First JV in the US has been agreed on deploying 100 projects at landfills that are strategically located for Class 8 fleet truck owners using a common local and regional delivery model

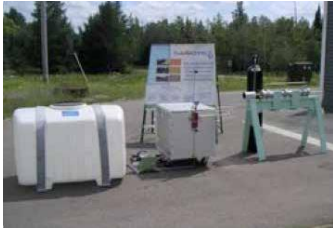
Secure Offtake

- GasTechno will franchise its turnkey GasTechno Energy Centers with a focus on Class 8 fleet truck conversions using corporate membership packaged plans
- GasTechno Energy Centers franchise owners each purchase a 10-year, methanol contract for 1-delivery truck per day (5,500 gallons) using its own Methanol Class 8 truck operation

Favorable Markets

- Policies like LCFs and IRA in US and RED II and RED III in Europe are driving increasing low CI renewable fuels and GasTechno has worked with World Bank GGFR in past 15 years
- Global growing demand for methanol from various sectors, including shipping and SAF production with a focus by global shipping and transportation sectors leading the demand

Our backstory and future plans



Gas Technologies LLC was founded

2004



First innovative Gas-to-Liquids (GTL) prototype

2008



Modular Mini-GTL® patented tech system is developed

2010



Commercial start and tech validation of first plants

2016



Production of NGL's and methanol from associated flare gas in North Dakota

2018



GasTechno Energy Center located in Boyne Falls, Michigan for R&D, and manufacturing GTL plants

2022



GasTechno Corp was founded

Nov 5, 2024



GasTechno Corp Issued Regulation S Offering

Feb 7, 2025

GASTECHNO CORP
12-31-23 and 12-31-24 PCAOB Audits To Be Completed For:
GAS TECHNOLOGIES LLC
GASTECHNO ENERGY & FUELS (USA) LLC
GASTECHNO ENERGY & FUELS HOLDING (UK) LIMITED
GASTECHNO ENERGY & FUELS (SG) PTE. LTD.
GASTECHNO ENERGY & FUELS (MY) SDN. BHD.

Complete PCAOB Audits of 5 Subsidiaries

May-July 2025



File S-1 SEC For Direct Listing on NYSE

Aug-Sept 2025



Direct Listing Approval on the NYSE

Nov-Dec 2025

The IP and AI Brains Behind The Operation

Portfolio Statistics – GtL and Direct GtL Landscapes

GTL stands for Gas-to-Liquids

GtL Landscape

Company	US Grants	US Apps	US Total	Intl Grants	Intl Apps	Intl Total	WW Grants	WW Apps	WW Total
Gas Techno	14	0	14	14	5	19	28	5	33
Linde	37	3	40	48	47	95	85	50	135
Haldor Topsoe	31	4	35	110	89	199	141	93	237
Shell	25	0	25	57	29	86	82	29	111
Air Liquide	19	2	21	35	21	56	54	23	77
EnBW	12	0	12	0	0	0	12	0	12
Exxon Mobil	11	0	11	12	6	18	23	6	29
Velocys	1	1	2	0	1	1	1	2	3

Direct GtL Landscape

Company	US Grants	US Apps	US Total	Intl Grants	Intl Apps	Intl Total	WW Grants	WW Apps	WW Total
Gas Techno	11	0	11	14	1	15	25	1	26
Linde	0	0	0	0	0	0	0	0	0
Haldor Topsoe	0	1	1	0	4	4	0	5	5
Shell	0	0	0	0	0	0	0	0	0
Air Liquide	0	0	0	0	0	0	0	0	0
EnBW	0	0	0	0	0	0	0	0	0
Exxon Mobil	0	0	0	0	0	0	0	0	0
Velocys	0	0	0	0	0	0	0	0	0

Landscape statistics as of July 31, 2020, with GasTechno numbers updated as of February 2021.

Patents and Technology
Leadership

North Dakota 7-Month Operations (2017-2018)

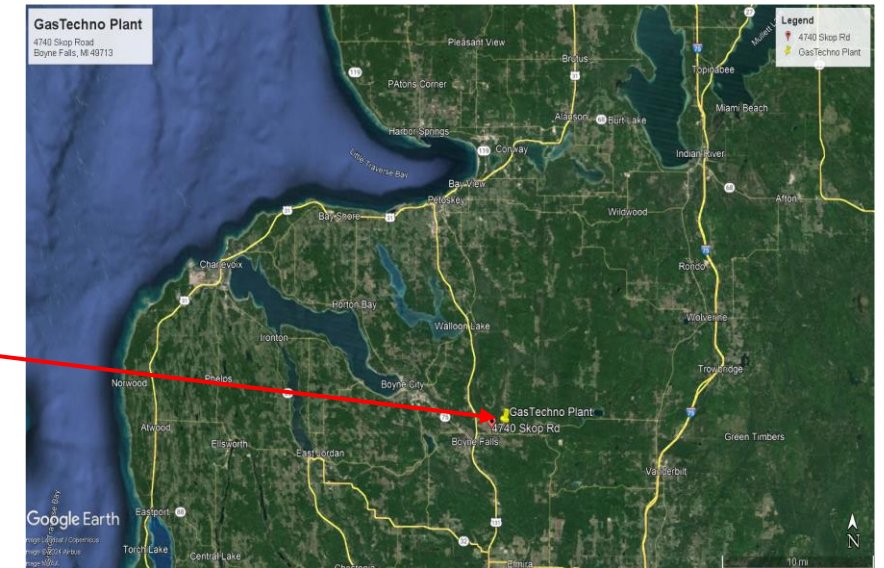
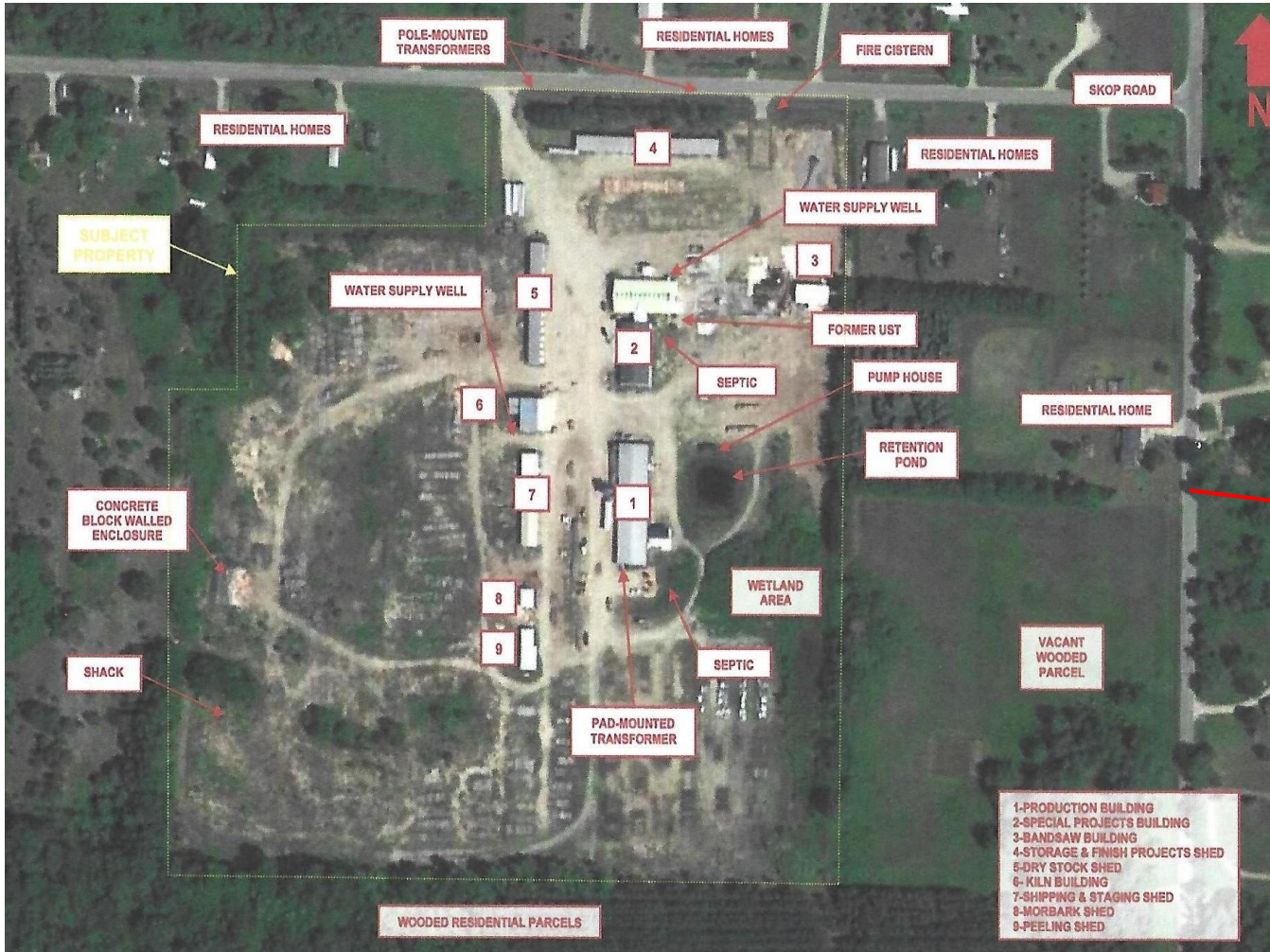


Gas Flaring Reduction Applications



Our First GasTechno Energy Center in Michigan

- Capital has been invested since May 2022 in the nations first GasTechno Energy Center and manufacturing facility
- The Energy Center is located at **4740 Skop Road, Boyne Falls, MI 49713**.
- Manufacturing will produce one GTL-750 plant per month. The site has on-site Class 8 Truck Conversions at the GasTechno Energy Center.



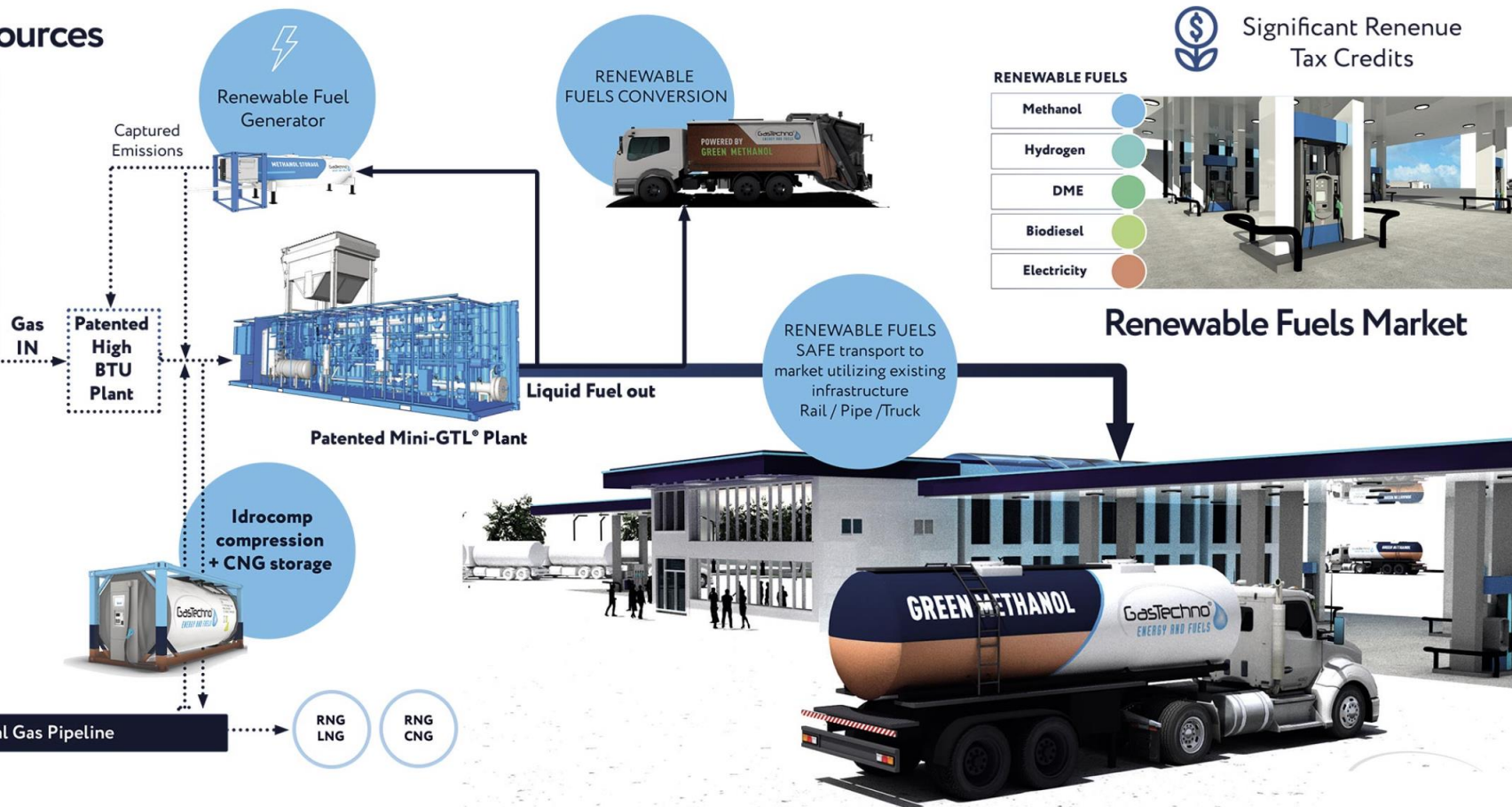
Our GasTechno Energy Center Carbon Pathway



Production of clean fuels for different applications



Renewable Sources

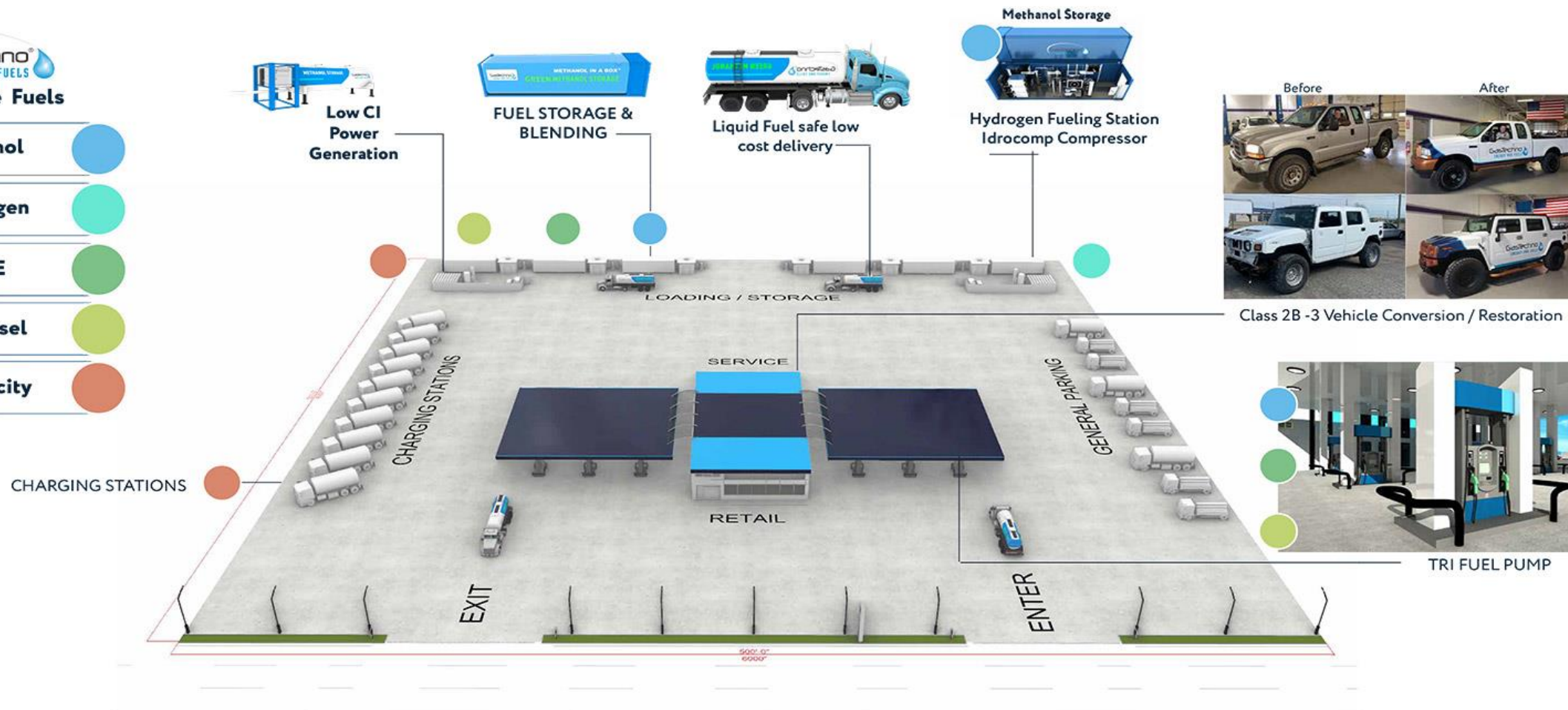


Our GasTechno Energy Center

America's First Renewable Energy Center

GasTechno Energy and Fuels Renewable Fuels

- Methanol
- Hydrogen
- DME
- Biodiesel
- Electricity



5,500 gallons of methanol per day from 1500 scfm raw landfill gas
50% sold for Class 8 Trucks as methanol truck conversions
50% sold for Class 8 Trucks as H2 fuel cell vehicles (FCEVs)
2.24 gallons of methanol with 1.35 gallons of water into 1 kg of H2.
\$4.44 cost per kg of H2
\$3 per gallon (\$1,000/MT) cost of MeOH

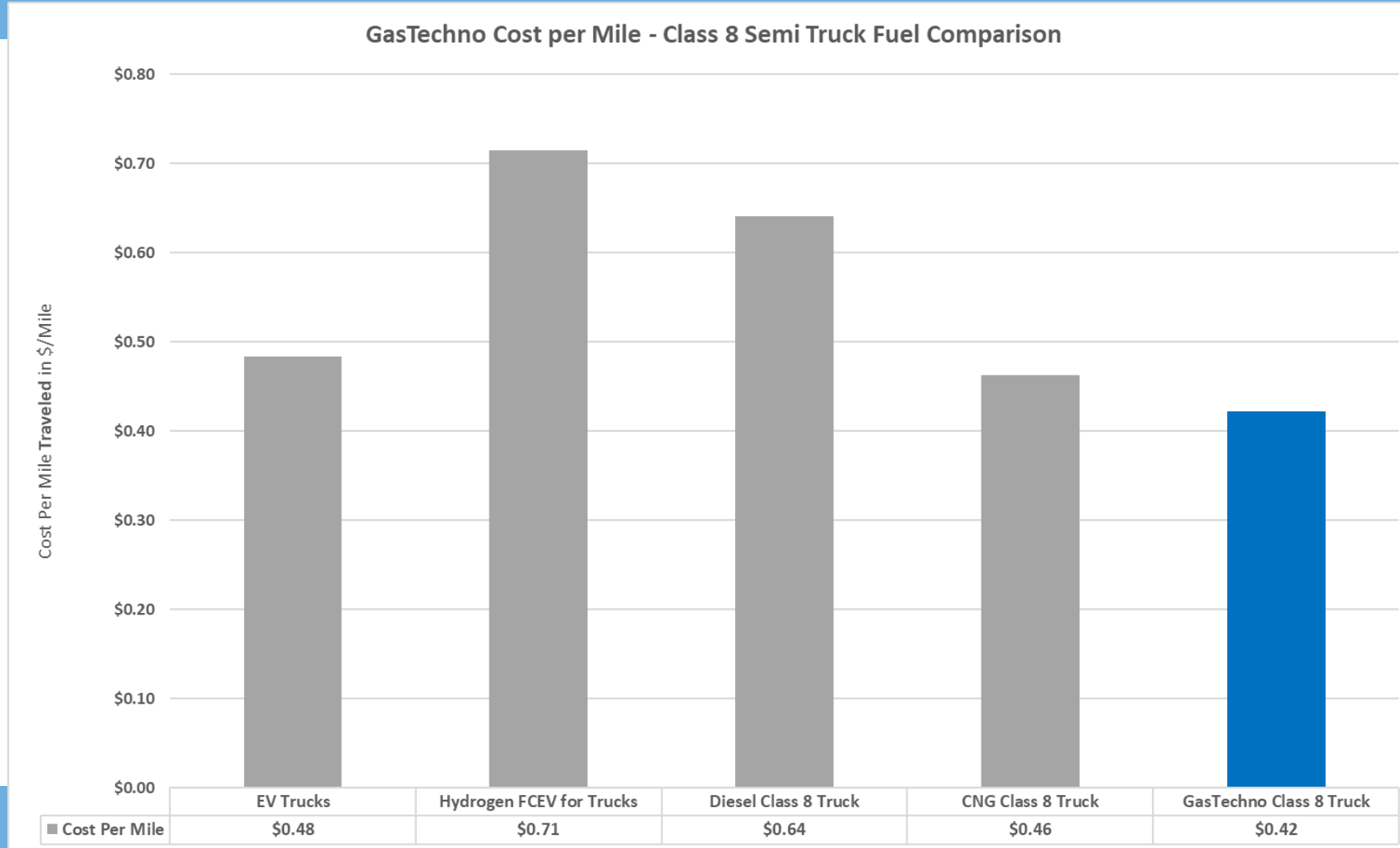
GasTechno Energy Center - \$8 to \$12+ sales prices per kg of H2

	FirstElement ∨ 0.00% CA, USA \$36.00/kg unch		Iwatani ∨ 0.00% CA, USA \$29.99/kg unch		Air Products ∨ 0.00% CA, USA \$29.99/kg unch
---	--	--	---	---	--

Gaseous hydrogen fueling prices at public stations in California remain unchanged this month

Source: SEP, prices are as of 2/24/2025.

Class 8 Truck Cost – Lowest Cost Methanol





Methanol Conversion Kit Services at the Energy Center

Diamond - EV powertrain + IC Renewable Fuel Conversion

convert existing vehicles into a **Mobile Power Plant** with Electric powertrain & onboard POWER Generation

Diamond Kit EV Powertrain + IC Renewable Fuel Conversion Kit / Generator



Renewable Fuel Credits



Dual Fuel option



On-site Power



On-board Power



Regenerative Tech.

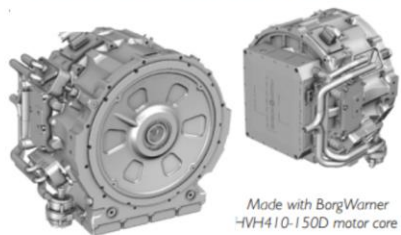


Hybrid

Create a **MOBILE POWER PLANT** with electric power + Renewable Fuel Generator + plug-in hybrid technology



Peak Power 425kW (570hp) at 750Vdc



Made with BorgWarner -IVH4110-150D motor core

Peak Torque	2620Nm
Peak Power	425kW
Continuous Torque	1700Nm
Continuous Power	234 kW
Maximum Speed	6000rpm
Weight	190 kg
Motor Cooling Medium	Dexron VI
Inverter Cooling Medium	50% E.G. / 50% Water
Maximum Water Temperature	80°C (Peak performance below 45°C, Mild Derate 60-80°C, No Torque at 100°C)
Combined Efficiency	95% peak (@200Nm, 5500rpm)

Renewable Fuel IC conversion / Generator

Thermal system cooling

Integrated Hybrid Module

MOBILE POWER PLANT - onboard power generation for onsite & backup applications
Bi-Directional onboard charging

Less Battery Module(s)

Electric Motor(s) & controller(s)



Power Electronics Controller

Renewable Fuels Tank(s)



Existing Vehicle: Remove starter, alternator, crankcase, transmission, drive axle when applicable

THANKS

Get in touch!



Walter Breidenstein
Chief Executive Officer

+1 231 535 2914
walterb@gasttechno.com
www.gasttechno.com

